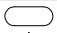



LEGEND

 = CRITICAL INSPECTION DIMENSIONS.

 = KEY PRODUCT CHARACTERISTICS



REVISION HISTORY						
REV	ZONE	DESCRIPTION	BY	APPR	DATE	ECN
1		ISSUE FOR PRODUCTION	T.N	P.M	10/10/16	9381
2		CHANGE TEXT ORIENTATION, OMIT LEADING ZEROS	T.N	P.M	11/10/16	9383

PART NUMBER BREAKDOWN

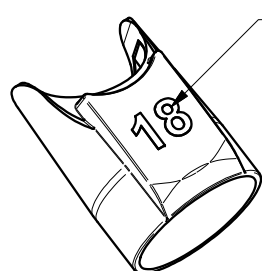
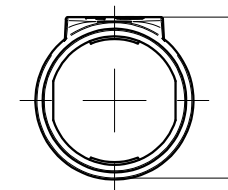
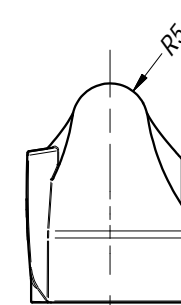
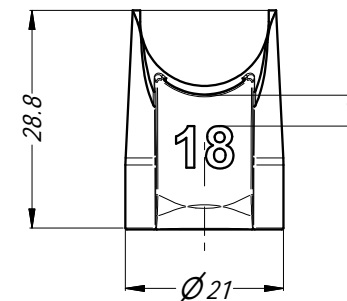
AX - MARK X - XXX

PART DESIGNATION

PRINT NUMBER:
FROM 1 TO 48 (OMIT LEADING ZEROS)
BLANK: NO PRINTING

COLOR CODE


0: BLACK
1: BROWN
2: RED
3: ORANGE
4: YELLOW
5: GREEN
6: BLUE
7: VIOLET
8: GREY
9: WHITE



EXAMPLE OF PRINT

NOTES:

1. SLEEVE P/No. 52520024-53x TO BE USED FOR ID PRINTING TO PRODUCE P/No. AX-MARKX-XXX. REFER TO DWG 52520024-530
2. PRINT COLOR TO BE BLACK FOR WHITE SLEEVE AND WHITE FOR ALL OF THE REST. TEXT FONT TO BE ARIAL BOLD 5.5mm HIGH.
3. NUMBER 6 AND 9 TO BE UNDERLINED.

UNLESS OTHERWISE SPECIFIED TOLERANCE TO BE		THIS DOCUMENT IS THE PROPERTY OF AMPHENOL AUSTRALIA PTY. LTD. NO PART THEREOF MAY BE REPRODUCED AND USED WITHOUT THE PRIOR WRITTEN CONSENT OF THE OWNER.				Amphenol Amphenol Australia Pty.Ltd, 22 Industry Blvd Carrum Downs, VIC 3201					
LINEAR		ANGULAR		MATERIAL:		TITLE:		PART No:		REV	
X ± 0.5		X' ± 1				ID MARKED SLEEVE		AX-MARKX-XXX		2	
X.X ± 0.1		X.X' ± 30'				AX SERIES		DRAWING No.		SHEET	
X.XX ± 0.05		X.XX' ± 15'				52520027-000-2		1/2			
BREAK ALL SHARP EDGES AND REMOVE ALL BURRS				DRN: T.N		DATE: 14/07/16					
				CKD: P.M		DATE: 14/07/16					
DO NOT SCALE				APP'D: P.M		DATE: 14/07/16					
FINISH:				SCALE: 1:1		SIZE: A4					
DIMENSIONS IN MILLIMETRES				 THIRD ANGLE PROJECTION							

CB4.17.F1

Mouser Electronics

Authorized Distributor

Click to View Pricing, Inventory, Delivery & Lifecycle Information:

[Amphenol:](#)

[AX-MARK5](#)